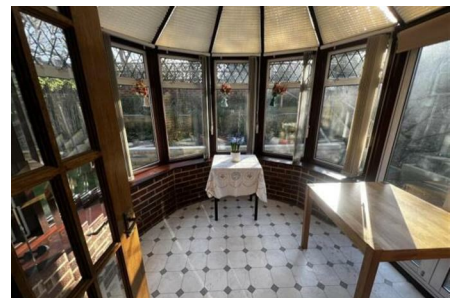
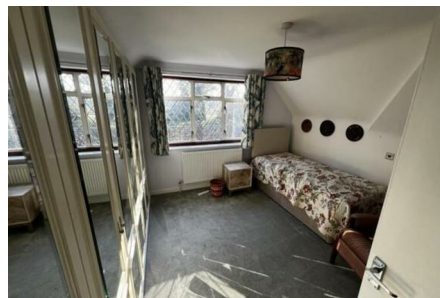


Deepdene Lane, Bournemouth, BH11 9RN



£1,500 Per Calendar Month



3 Bedroom Detached Bungalow to Let – Deepdene Lane, Bournemouth, BH11 9RN
£1,500 PCM

A well-presented three-bedroom with two bathrooms, detached bungalow located in a quiet residential area of North Bournemouth, available to let from early March. The property is offered part furnished or unfurnished, providing flexibility to suit a range of tenants.

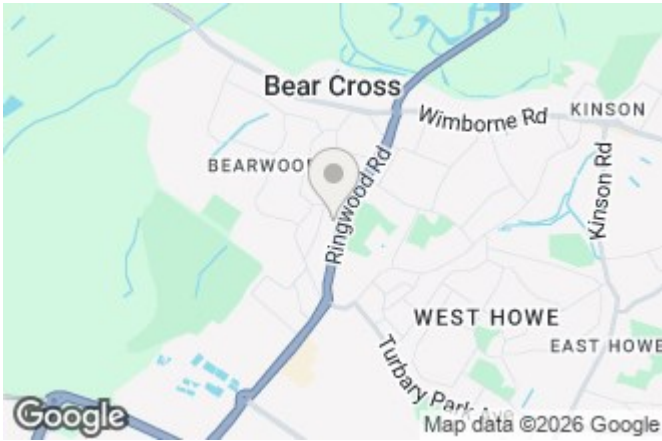
The bungalow benefits from a spacious and practical layout, ideal for families, professionals, or those looking for single-level living. Well-proportioned bedrooms are complemented by comfortable living space and a functional kitchen, making this a welcoming and versatile home.

Location highlights:

Situated in a popular residential area with a strong community feel

BELVOIR!

Belvoir Bournemouth
122-124 Castle Lane West, Bournemouth, Dorset, BH9 3JU



Call: 01202 430 108

belvoir.co.uk

